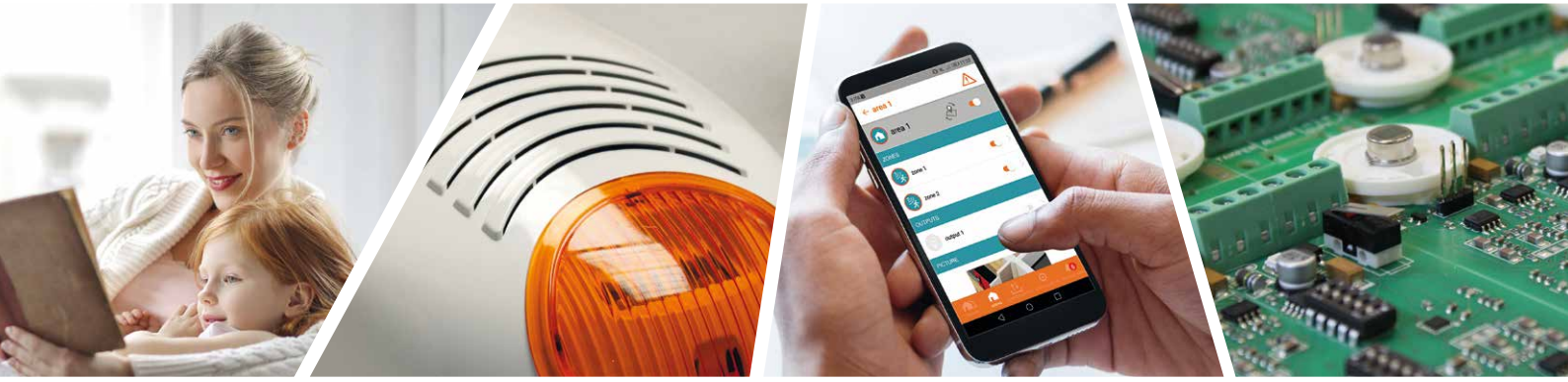


Quality from **experience** made in **Italy**.

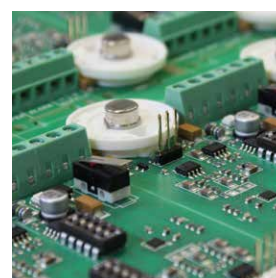
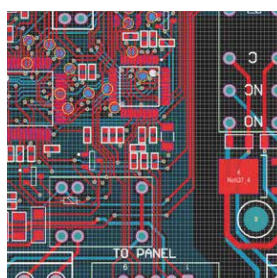


CATALOGUE 2020

AMC Elettronica was founded in 1974 and the first product designed by the company was in collaboration with the University of Pavia - this being the Microwave detector "RIVELA". It immediately obtained a huge response in the Italian and the foreign market. Within a few years the Company established itself as a successful player within the Security Sector despite this to be still an unknown sector in the Italian Industry, the most impact caused by the high quality design and local production of the detectors. In the 80's AMC decided to launch the Alarm Control Units, Diallers and Sirens to the already now well established detector market. In the mid 80's the EL80 was launched - the first AMC' Alarm Control Unit, while four years later the first dialler with vocal synthesis, the CT901SV was introduced to the market. The 90's indicated a revolutionary change in the security market and AMC was ready to meet this demand by launching the first remote controllable and radio system. AMC, always moving with the times, on and on this occasion, at the Milan's International Security Fair in 98' presents the C136 Alarm Control Unit, a fully pc programmable system via modem, and the CR100 system, a completely lithium-ion battery supplied radio alarm system.

Quality from **experience** made in **Italy**.

Today **AMC** has a well established international distribution network, featuring excellent products, "made in Italy" and especially paying attention to detail when designing the products. This has been well recognised in the industry, testimony to this is the numerous awards received for meeting customer needs and expectations. AMC is a wholly Italian owned company. Their main activity is the production and the commercialisation of Alarm components. The company's headquarter is in Alzate Brianza which is located near Como and only 30 km north of Milan, which can be reached with ease via the A4 and A8 highway - pretty centrally and easily reachable from all 3 main Airports, i.e. Bergamo, Milano Linate and Milano Malpensa. AMC has a test laboratory and a fully automated production line for the SMT technology electronic boards. To greater guarantee the product, the business seeks further approval from outside authorities, authorised to inspect the equipment continuously to allow to maintain the high quality.



Index

Control panels

K Series	pag. 2
X Series	pag. 4
X64	pag. 6
Unika - touchscreen keypad	pag. 7
Wired Systems Accessories	pag. 8
XR800 - XR900	pag. 12
IFV800 - IFV900 - detector with camera	pag. 14
Wireless Systems Accessories 800 / 900 Series	pag. 15

Detectors

ProLine	pag. 20
Promask	pag. 22
Smile	pag. 23
Mouse	pag. 24

Mouse GS	pag. 25
GS1 - SS14	pag. 26
Soutdoor	pag. 27
DT16 - IF16/L - IF16/T	pag. 30

Sirens

Blade	pag. 32
SR Series	pag. 33
Iside	pag. 34
24 V Sirens	pag. 35
PZ2	pag. 35

Speech dialler

Voxout	pag. 36
--------	---------

CONTROL PANELS

K Series

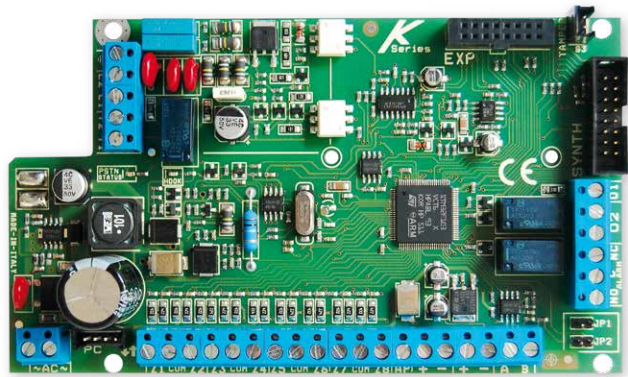
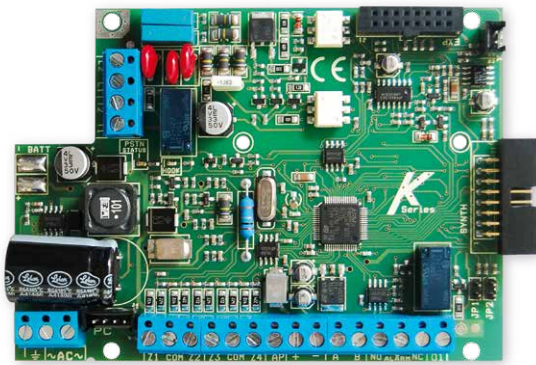


EN 50131 / GRADE 2 / CLASS 2

K4 | 4 - 12 zones
split double, triple EOL
+ 2 zones for each keypad*
(max 4 zones)

K8 | 8 - 24 zones
split double, triple EOL
+ 2 zones for each keypad*
(max 8 zones)

K8plus | 8 - 64 zones
double, triple EOL



GPRS/3G/4G module

IP module

Multisplit zones
K4 - K8 (without expansions)

BUS line (4 wires) RS485



CMS multiformat

Hybrid system (wired and wireless input)

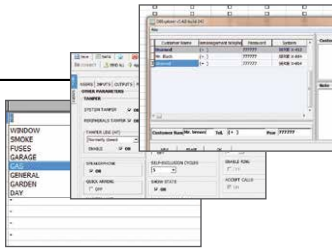
PSTN on board

- 1 zone with single / double / triple EOL
- 2 zones with tamper protection
- 3 zones
- many other configurations



iOS/Android APP
AMCPlus





Settable by PC



The **K Series** are security control panels for building protection; hybrid system (wired and wireless input); EN 50131, Grade 2, Class 2 approved. The control panel is equipped of 4/8 zones, expandable to 16/64. It is possible to obtain more zones by double and triple EOL split line (K4-K8). K Series are able to notify one or more situations of ALARM, ROBBERY, TAMPERING and TROUBLE with different carriers:

- **PSTN LINE on board** (voice beep calls**, Contact ID, SIA fsk, etc.)
- **GPRS/3G/4G module** (voice beep calls**, SMS, Contact ID, DC09 IP protocol for Contact ID and SIA IP)
- **IP module** (DC09 IP protocol for Contact ID and SIA IP)

** The K Series has not voice synthesis, the calls are made with beeps

The panel can be controlled by the App AMC Plus (iOS / Android) with IP module and/or GPRS/3G/4G module. The programming can be made with keypad and/or PC software. The programming with software can be made remotely with IP module and/or GPRS/3G/4G module.



Technical Features	K4	K8	K8 Plus
ZONES	4 - 12 zones split double, triple EOL +2 zones for each keypad* (max 4 zones)	8 - 24 zones split double, triple EOL +2 zones for each keypad* (max 8 zones)	8 - 64 zones double, triple EOL
WIRELESS ZONES	64 zones	64 zones	64 zones
OUTPUTS	1 on board - expandable to 8 (with expansions or keypads)	2 on board - expandable to 8 (with expansions or keypads)	2 on board - expandable to 17 (with expansions or keypads)
USER CODE	32	32	64
AREAS	4	4	8
GROUPS	4	4	4
KEYPADS	4	4	8
TAG READER	4	4	8
LOG EVENTS	1000	1000	1000
PHONE NUMBERS	8 for SMS and private calls + 8 for CMS	8 for SMS and private calls + 8 for CMS	8 for SMS and private calls + 8 for CMS
CARRIERS	PSTN on board, GPRS/3G/4G module, IP module	PSTN on board, GPRS/3G/4G module, IP module	PSTN on board, GPRS/3G/4G module, IP module
REMOTE MANAGEMENT IP - GPRS/3G/4G	by App (iOS - Android)	by App (iOS - Android)	by App (iOS - Android)
REMOTE PROGRAMMING IP - GPRS/3G/4G	by PC software	by PC software	by PC software
TIMERS	4 per day week	4 per day week	4 per day week

* Keypads with zones are Unika, K-lcd Blue, K-lcd Blue Tag, K-lcd Light Plus

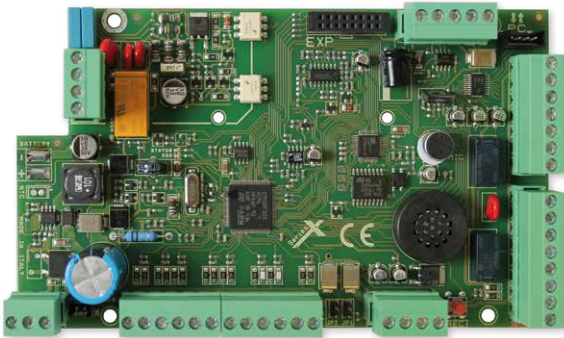
CONTROL PANELS

XSeries

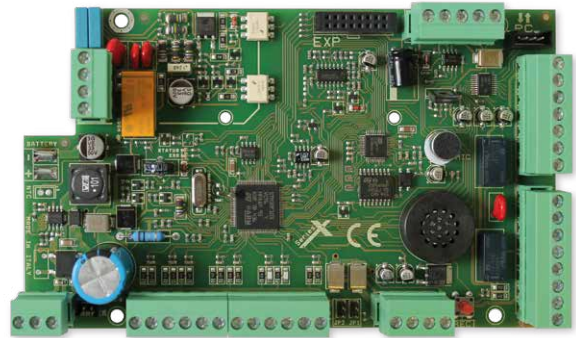


EN 50131 / GRADE 2 / CLASS 2

X824 | 8 - 24 zones
split double, triple EOL
+ 2 zones for each keypad* (max 8 zones)



X864 | 8 - 64 zones
double, triple EOL

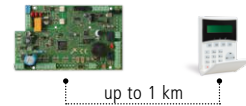


X412 | 4 - 12 zones
split double, triple EOL
+ 2 zones for each keypad* (max 4 zones)



GPRS/3G/4G module | IP module | PSTN on board

BUS line (4 wires) RS485



Voice support

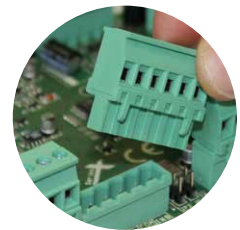
Hybrid system (wired and wireless input)



CMS multiformat



Voice managing

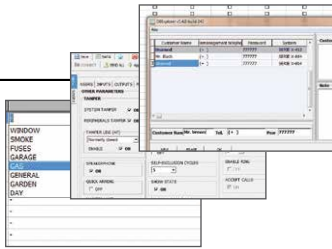


Clamps removable (X824-X864)



iOS/Android APP
AMCPlus





Settable by PC



The **X Series** are security control panels for building protection; hybrid system (wired and wireless input); EN 50131, Grade 2, Class 2 approved. The control panel has audio support on board and is equipped of 4/8 zones, expandable to 16/64. It is possible to obtain more zones by double and triple EOL split line (X412-X824). X Series are able to notify one or more situations of ALARM, ROBBERY, TAMPERING and TROUBLE with different carriers:

- **PSTN LINE on board** (voice call, Contact ID, SIA fsk, etc.)
- **GPRS/3G/4G module** (voice call, SMS, Contact ID, DC09 IP protocol for Contact ID and SIA IP)
- **IP module** (DC09 IP protocol for Contact ID and SIA IP)



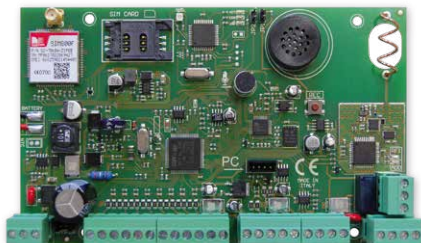
The panel can be controlled by the App AMC Plus (iOS / Android) with IP module and/or GPRS/3G/4G module. The programming can be made with keypad and/or PC software. The programming with software can be made remotely with IP module and/or GPRS/3G/4G module.

Technical Features	X412	X824	X864
ZONES	4 - 12 zones split double, triple EOL +2 zones for each keypad* (max 4 zones)	8 - 24 zones split double, triple EOL +2 zones for each keypad* (max 8 zones)	8 - 64 zones double, triple EOL
WIRELESS ZONES	64 zones	64 zones	64 zones
OUTPUTS	5 on board - expandable to 8 (with expansions or keypads)	5 on board - expandable to 8 (with expansions or keypads)	5 on board - expandable to 17 (with expansions or keypads)
USER CODE	32	32	64
AREAS	4	4	8
GROUPS	4	4	4
KEYPADS	4	4	8
TAG READER	4	4	8
LOG EVENTS	1000	1000	1000
PHONE NUMBERS	8 for SMS and private calls + 8 for CMS	8 for SMS and private calls + 8 for CMS	8 for SMS and private calls + 8 for CMS
CARRIERS	PSTN on board, GPRS/3G/4G module, IP module	PSTN on board, GPRS/3G/4G module, IP module	PSTN on board, GPRS/3G/4G module, IP module
REMOTE MANAGEMENT IP - GPRS/3G/4G	by App (iOS - Android)	by App (iOS - Android)	by App (iOS - Android)
REMOTE PROGRAMMING IP - GPRS/3G/4G	by PC software	by PC software	by PC software
TIMERS	4 per day week	4 per day week	8 per day week

* Keypads with zones are Unika, K-lcd Blue, K-lcd Blue Tag, K-lcd Light Plus

WIRED / WIRELESS

X64



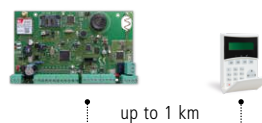
- **64** wireless / wired zones
- **56** programmable wireless devices on board
- **56** programmable wireless devices with second wireless expansion
- **GPRS** or **3G** or **4G** modules on board
- **868 MHz** or **916 MHz** frequency
- Settable by PC

Two-way wireless system

Radio range 1 km

Voice support

BUS line (4 wires) RS485



CMS multiformat

Technical Features	X64
WIRED ZONES ON BOARD	8
WIRELESS DEVICES ON BOARD	32 devices 20 remote controls, 4 sirens
WIRELESS / WIRED ZONES	64 (for wired zones with expansions or keypads)
OUTPUTS	2 on board expandable to 14 (with expansions or keypads)
USER CODE	64
AREAS	8
GROUPS	4
KEYPADS	8
TAG READER	8
LOG EVENTS	1000
PHONE NUMBERS	8 for SMS and private calls + 8 for CMS
CARRIERS	GPRS / 3G / 4G
REMOTE MANAGEMENT GPRS/3G/4G	by App (iOS - Android)
REMOTE PROGRAMMING GPRS/3G/4G	by PC software
TIMERS	8 per day week

iOS/Android APP
AMCPlus



The **X64** is security control panel for building protection; hybrid system (wired and wireless input). The control panel has audio support on board and it's equipped of 8 wired zones on board expandable to 64 with expansion module KX-in. The control panel has an integrated radio receiver on which it is possible to program 32 wireless devices, 20 remote controls and 4 wireless sirens. The control panel support 64 wireless devices. X64 is able to notify one or more situations of ALARM, ROBBERY, TAMPERING and TROUBLE with different carriers:

GPRS/3G/4G

(voice call, SMS, Contact ID, DC09 IP protocol for Contact ID and SIA IP).

The panel can be controlled by the App AMC Plus (iOS / Android).

The programming can be made by keypad and/or PC software via USB cable and remotely via Cloud.

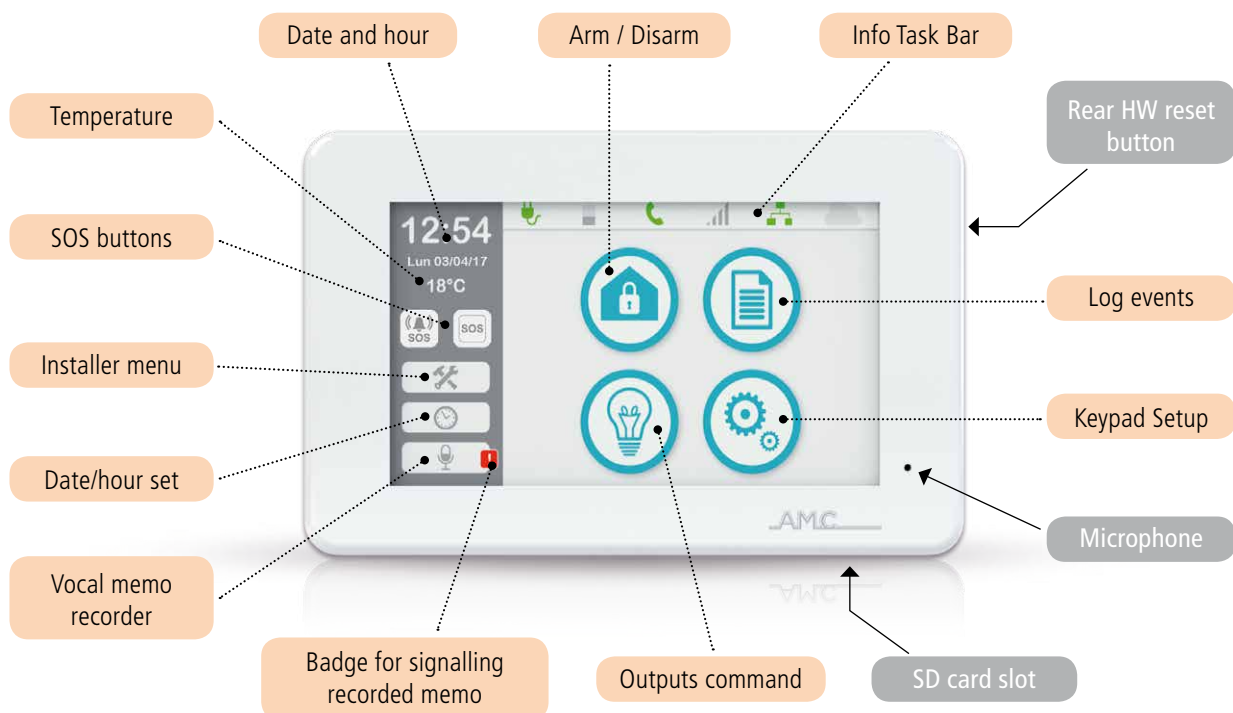
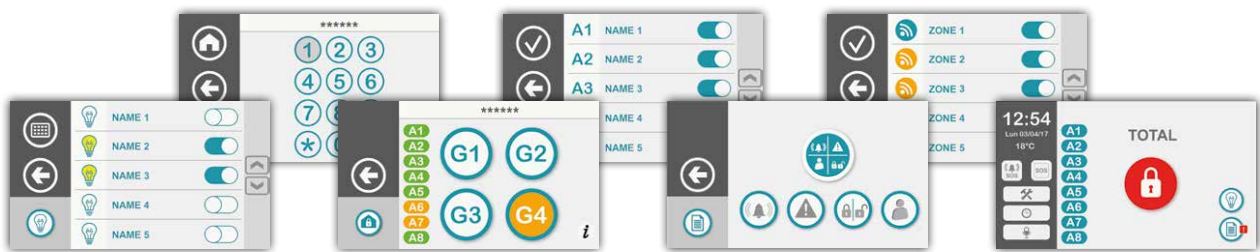
	2G	3G	3G	3G	AMC WIRELESS 868 MHz	AMC WIRELESS 916 MHz
GSM/GPRS/EDGE	850/900/1800/1900 MHz	900/1800 MHz	850/900/1800/1900 MHz	850/900/1800/1900 MHz		
UMTS/HSDPA		900/2100 MHz	850/1900 MHz	850(800)/2100 MHz		
Codes:						
X64-2E8	✓				✓	
X64-3E8		✓			✓	
X64-3A8			✓		✓	
X64-3J9				✓		✓

Unika TOUCHSCREEN KEYPAD



Unika is the AMC touchscreen keypad with 5-inches screen and ABS thin cover. It is equipped with an intuitive graphical interface user friendly. With just few steps you can manage all the functions of the keypad. Large screen and cool design make the Unika keypad a UNIQUE product up to date.

- Display 5 inches TFT high resolution (480 x 272)
- User friendly icons interface
- SD card reader for image loading, FW upgrading
- NFC reader for smartphone recognizing
- Microphone and speaker
- Temperature sensor
- Vocal memo
- Photo frame screensaver
- Thin cover
- Wall installation
- Dimensions: W 155, H 100, D 18 mm



WIRED SYSTEMS ACCESSORIES



■ Unika

Touchscreen keypad with RFID/NFC tag reader

Touchscreen keypad with 5 inches screen and ABS thin cover. Cool and intuitive graphic interface. You can manage all function of panel with few touch. Dimensions: W 155, H 100, D 18 mm



■ K-lcd Blue Tag

32 characters lcd keypad with RFID/NFC tag reader

Lcd keypad with RFID/NFC integrated tag reader. Backlight liquid crystal display 32 characters on two lines. Two configurable lines as inputs and/or outputs; 3 signalling LEDs. Protective front door. Programmable keys for quick commands. Dimensions: W 135, H 116, D 24 mm



■ K-lcd Blue • 32 characters lcd keypad

EN 50131 / GRADE 2 / CLASS 2

Backlight liquid crystal display 32 characters on two lines. Two configurable lines as inputs and/or outputs; 3 signalling LEDs. Protective front door. Programmable keys for quick commands. Dimensions: W 135, H 116, D 24 mm



■ K-lcd Light Plus • 32 characters lcd keypad

Backlight liquid crystal display 32 characters on two lines. Two configurable lines as inputs and/or outputs; 3 signalling LEDs. Protective front door. Programmable keys for quick commands. Dimensions: W 86, H 114, D 23 mm



■ K-lcd Light • 32 characters lcd keypad

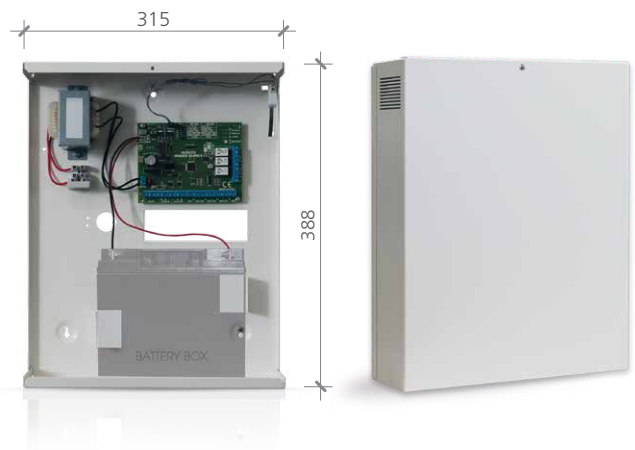
Backlight liquid crystal display 32 characters on two lines; 3 signalling LEDs. Protective front door. Programmable keys for quick commands. Dimensions: W 86, H 114, D 23 mm

■ **KX-AL • Remote power supply**

KX-AL is a remote power supply controlled from panel via bus RS485.

- Main power 230 V or 110 V
- Output Power 27 W (13.8 Vdc @ 2A)
+ 8 W for backup battery charger
- Battery charger with different selections (18 Ah and/or 7 Ah)
- Electronic overcurrent and overload protection
- Tamper for remove and opening system
- 8 inputs and 3 outputs expansion for K/X Series and XR panel
- Completely diagnostic checks with panel and monitoring software
- Possibility of use in stand-alone mode
- Possibility to use up 2 power supply for each panels installation

Dimensions: W 315, H 388, D 95 mm



■ **KX-PB • Transponder**

Proximity device for arm, disarm and partial arm the control panel. IP54
To use with KX-TAG and KX-KEY.
Available colours: white
Dimensions: W 80, H 135, D 28 mm



■ **KX-PS • Transponder**

Device for civil series with 1 unit.
Four signalling leds for system status and control. To use with KX-TAG and KX-KEY.
Dimensions: W 30, H 20, D 50 mm



■ **KX-TAG**

Badge with RFID tag, for arm and disarm the control panel.
Dimensions: 85 x 54 mm



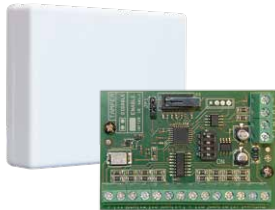
■ **KX-KEY**

Keychain in ABS black, IP68, with RFID tag for arm and disarm the control panel.
Dimensions: 60 x 25 x 6 mm



■ **COM/USB • USB adapter**

COM/USB is an adapter for programming control panels.



■ **KX-in** • Expansion board

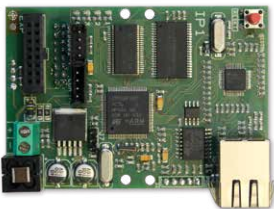
KX-in is a 8 zones expansion module with auto protection tamper box.
Dimensions: W 106, H 80, D 25 mm



■ **KX-out** • Expansion board

KX-out is a 3 relay outputs expansion module with auto protection tamper box.
Dimensions: W 106, H 80, D 25 mm

IP MODULE FOR CONNECTION PANEL TO INTERNET / CLOUD



■ **IP-1**

IP module for connection panel to Internet/Cloud.
Usable for CMS messages, Cloud service, App management, remote programming, video verify etc.

COMMUNICATION MODULES

Usable for Voice call, SMS, CMS messages, Cloud service, App management, remote programming, video verify etc.



■ **X GPRS** - GPRS module

■ **X 3E** - GPRS/3G module

■ **X 3A** - GPRS/3G module

■ **X 3J** - GPRS/3G module

■ **X 4W** - GPRS/3G/4G module

868 MHz ■ **K-radio800**

916 MHz ■ **K-radio900**

32 characters lcd keypad with an integrated radio receiver

It's a keypad with an integrated radio receiver on serial bus with the ability to store 32 two-way radio devices of different types: remote controls, detectors, smoke detectors, inertial etc. Thanks to 128-bit AES encryption (Advanced Encryption Standard) ensures maximum protection against attempts of cloning or masking signal. The power of transmission of the radio signals from the various devices is managed and limited by control panel to a sufficient value, thus increasing the average life of the batteries. The communication between the control panel and devices is bidirectional for each type of transmission which must be confirmed by the receiver, allowing to obtain the maximum safety concerning the outcome of communication and to avoid congestion of the radio signals. The operations of installation and maintenance are made easier by the total lack of switches and potentiometers hardware; all devices are configurable by the control panel. The learning mode of the devices can be automatic by means of self-learning by the control panel or manually by means of coding of each individual device.

Dimensions: W 135, H 116, D 24 mm

Order Codes:

K-radio800: 868 MHz

K-radio900: 916 MHz



868 MHz ■ **Expr800**

916 MHz ■ **Expr900**

Radio expansion

It's a radio receiver on serial bus with the ability to store 32 two-way radio devices of different types: remote controls, detectors, smoke detectors, inertial etc. Thanks to 128-bit AES encryption (Advanced Encryption Standard) ensures maximum protection against attempts of cloning or masking signal. The power of transmission of the radio signals from the various devices is managed and limited by control panel to a sufficient value, thus increasing the average life of the batteries. The communication between the control panel and devices is bidirectional for each type of transmission which must be confirmed by the receiver, allowing to obtain the maximum safety concerning the outcome of communication and to avoid congestion of the radio signals. The operations of installation and maintenance are made easier by the total lack of switches and potentiometers hardware; all devices are configurable by the control panel. The learning mode of the devices can be automatic by means of self-learning by the control panel or manually by means of coding of each individual device.

Dimensions: W 37, H 130, D 27 mm

Order Codes:

Expr800: 868 MHz

Expr900: 916 MHz



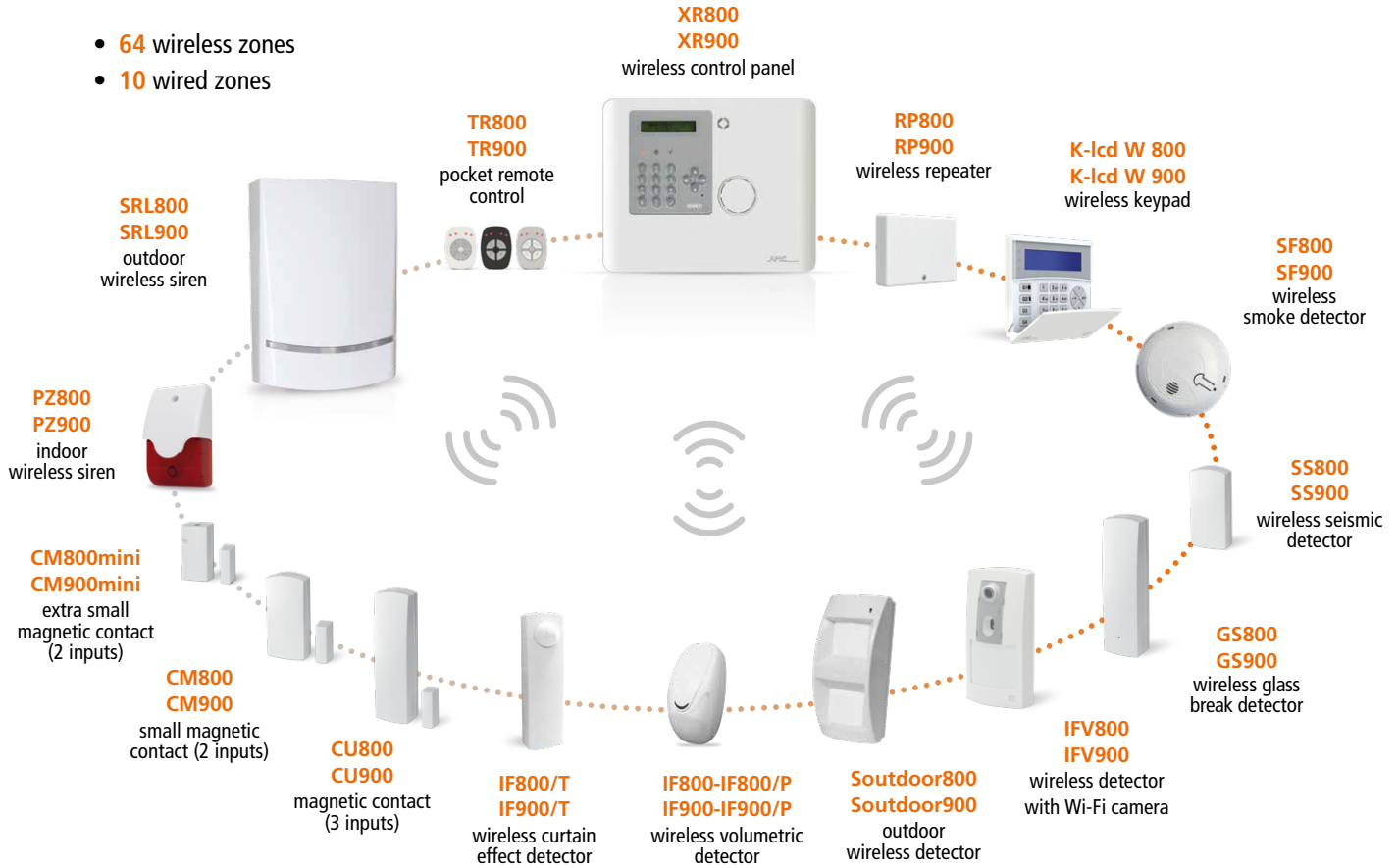
WIRELESS CONTROL PANEL

XR800 · 868 MHz
XR900 · 916 MHz



EN 50131 / GRADE 2 / CLASS 2

- 64 wireless zones
- 10 wired zones











The **XR800** and **XR900** are wireless control panels by AMC. The control panels are equipped of 64 wireless zones that are configured in different functions (alarm, robbery, smoke, detection, seismic). They are able to notify one or more situations of ALARM, ROBBERY, TAMPERING and TROUBLE with different carriers:

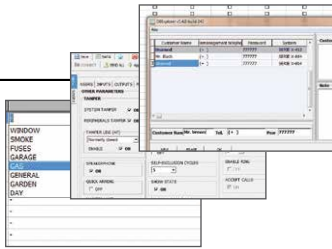
- **PSTN LINE on board** (voice call, Contact ID, SIA fsk, etc.)
- **GPRS/3G/4G module** (voice call, SMS, Contact ID, DC09 IP protocol for Contact ID and SIA IP)
- **IP module** (DC09 IP protocol for Contact ID and SIA IP)

The panel can be controlled by the App AMC Plus (iOS/Android) with IP module and/or GPRS/3G/4G module.

The programming can be made with keypad and/or PC software. The programming with software can be made remotely with IP module and/or GPRS/3G/4G module.

XR800 and XR900 are compatible with all ACCESSORIES of K and X Series:

<p>Unika touchscreen keypad</p> 	<p>K-lcd Blue keypad</p> 	<p>KX-in expansion board</p> 	<p>IP module</p> 
<p>K-lcd Light K-lcd Light Plus keypad</p> 	<p>K-lcd Blue Tag keypad with RFID / NFC tag reader</p> 	<p>KX-out expansion board</p> 	<p>GPRS/3G/4G modules</p> 



Settable by PC



- Two-way wireless system
- Radio range 1 km
- Vectors: PSTN - IP - GPRS - 3G - 4G
- Batteries included
- BUS line (4 wires) RS485
- Siren on board
- Voice support
- PSTN on board



CMS multiformat



Technical Features	XR800 / XR900
WIRELESS ZONES	64 zones
WIRED ZONES	2 on board - expandable to 10 (with expansions or keypads)
OUTPUTS	2 on board - expandable to 14 (with expansions or keypads)
USER CODE	64
AREAS	4
GROUPS	4
KEYPADS	2
TAG READER	4
LOG EVENTS	1000
PHONE NUMBERS	8 for SMS and private calls + 8 for CMS
CARRIERS	PSTN on board, GPRS/3G/4G module, IP module
REMOTE MANAGEMENT IP - GPRS/3G/4G	by App (iOS - Android)
REMOTE PROGRAMMING IP - GPRS/3G/4G	by PC software
TIMERS	4 per day week



iOS/Android APP
AMCPlus



WIRELESS SYSTEMS ACCESSORIES

800 Series • 868 MHz
900 Series • 916 MHz



EN 50131 / GRADE 2 / CLASS 2

IFV800 / IFV900

Wireless PIR detector with integrated Wi-Fi camera

PIR detector with a high resolution camera. The transmission of the pre-post alarm video is sent through the integrated Wi-Fi module on board and view with the App AMC Plus+. It is also possible to view live video without alarms. The transmission by Wi-Fi technology allow fast data exchange with the Cloud, consequently IFV800/IFV900 is very performing in terms of upload video time and quality in case of alarm. It is possible modify the quality of video with internal menu of detector that can be programmed direct via Wi-Fi. It is equipped with an infrared illuminator for low level light of the room. The images are sent to the Cloud through the home Wi-Fi network.

Available colours: white

Order Codes:

IFV800: 868 MHz, white colour

IFV900: 916 MHz, white colour



VeoSystem
 VIDEO VERIFICATION



The system can be managed through the App **AMC Plus+**:

- DOWNLOAD PRE-POST ALARM VIDEO FROM CLOUD
- LIVE VIEW THROUGH THE CLOUD
- PUSH SYSTEM NOTIFICATIONS



Technical Features	IFV800 / IFV900
EN 50131 / GRADE 2 / CLASS 2	conform
POWER SUPPLY	6 - 15 Vdc
BACKUP BATTERY	Lithium 2032 - 3 V
CONSUMPTION	min 90 mA - max 115 mA
RFI PROTECTION	30 V/m
TEMPERATURE COMPENSATION	YES
WIRELESS FREQUENCY	868.3 MHz / 916.0 MHz
PIR TYPE	digital
DIGITAL ANALYSIS	YES
RANGE PIR	12 mt
PIR LENS	Fresnel 22 pattern on 3 levels
PIR ANGLE	90°
OPERATING TEMPERATURE	from -10°C to +40°C
WI-FI	standard 802.11b/g/n
CAMERA ANGLE	120°
CAMERA LENS	2.8 mm
CAMERA SENSOR	1/4 inch
CAMERA RESOLUTION	160x120 - 320x240 - 352x288 640x480 - 1024x768
FRAME PRE-POST ALARM	16
INFRARED LIGHT	YES
WALK TEST'S LED	YES
ANTI-OPENING TAMPER	YES
BACK TAMPER	YES
PULSE COUNTER	YES
BRACKET AVAILABLE	YES
HOUSING	ABS
DIMENSIONS	130 x 65 x 40 mm

RP800 / RP900 • Wireless repeater

RP800 and RP900 are able to repeat all the signals coming from all wireless systems 800 Series / 900 Series:

- 32 wireless devices
- 20 keyfobs
- 4 wireless keypads
- 4 wireless sirens

It's powered by external power of 12Vdc and it has rechargeable batteries with duration of 24/48h without main power. It's programmable via software with wireless devices codes or in self learning mode.

Dimensions: W 106, H 80, D 25 mm

Order Codes:

RP800: 868 MHz

RP900: 916 MHz



K-lcd W 800 / K-lcd W 900 • 32 characters lcd wireless keypad

Bidirectional wireless keypad powered by batteries (2 batteries AAA - Alkaline 1.5V). It can be fed with external power (4 - 18 Vdc). It is equipped with a LCD display 32 characters on two lines, and a programmable NFC / RFID tag reader, with which it is possible to arm / disarm and enable / disable programmed outputs. It is a full bidirectional keypad and allows the user to have a real feedback of the status of the system (not ready zones, troubles etc.). Dimensions: W 135, H 116, D 24 mm

- | | |
|--|--------------------------|
| • Arm / disarm panel (in all configurations) | • Allow technical access |
| • Not ready zones alert | • Log event reading |
| • Bypass zones | • Outputs triggering |
| • Change / modify personal user code | • Tag readers management |
| • External power or batteries (included) | |



Order Codes:

K-LCDW800: 868 MHz

K-LCDW900: 916 MHz



WIRELESS SYSTEMS ACCESSORIES

800 Series • 868 MHz 900 Series • 916 MHz

EN 50131 / GRADE 2 / CLASS 2



■ CM800mini / CM900mini • Extra Small magnetic contact

It's a very small device; it has 2 completely separable and partitionable configurable inputs: an internal REED and a clamped input for an external generic contact. It communicates with the control panel by a bidirectional digital radio transmission channel to avoid signal collisions or band saturation and ensure high stability and precision. The 128 bit AES encryption code guarantee an high security. It's provided with anti-opening protection. It's also supervised (automatic life test). The standard lithium-ions battery allows a very long duration. Available colours: white, dark brown - Dimensions: W 25, H 50, D 17 mm

Order Codes:

CM800mini: 868 MHz, white colour

CM900mini: 916 MHz, white colour

CM800mini-M: 868 MHz, dark brown colour

CM900mini-M: 916 MHz, dark brown colour



■ CM800 / CM900 • Small magnetic contact

It's a small device; it has 2 completely separable and partitionable configurable inputs: an internal REED and a clamped input for an external generic contact. It communicates with the control panel by a bidirectional digital radio transmission channel to avoid signal collisions or band saturation and ensure high stability and precision. The 128 bit AES encryption code guarantee an high security. It's provided with anti-opening protection. It's also supervised (automatic life test). The standard lithium-ions battery allows a very long duration. Available colours: white, dark brown - Dimensions: W 37, H 78, D 21 mm

Order Codes:

CM800: 868 MHz, white colour

CM900: 916 MHz, white colour

CM800-M: 868 MHz, dark brown colour

CM900-M: 916 MHz, dark brown colour



■ CU800 / CU900 • Magnetic contact

It has 3 completely separable and partitionable configurable inputs: an internal REED, a clamped input for an external generic contact, a clamped input for fast contacts (rolling shutter, glass brake) with adjustable sensibility. It communicates with the control panel by a bidirectional digital radio transmission channel to avoid signal collisions or band saturation and ensure high stability and precision. The 128 bit AES encryption code guarantee an high security. It's provided with anti-opening protection. It's also supervised (automatic life test). The standard lithium-ions battery allows a very long duration. Available colours: white, dark brown - Dimensions: W 37, H 130, D 27 mm

Order Codes:

CU800: 868 MHz, white colour

CU900: 916 MHz, white colour

CU800-M: 868 MHz, dark brown colour

CU900-M: 916 MHz, dark brown colour



■ **IF800/T / IF900/T** • Wireless curtain effect detector

It's a wireless infrared detector, with an adjustable range from 1 mt up to 5 mt, designed to realize a "curtain shape" protection barrier useful for doors and windows or everywhere is necessary to detect a movement that happens in only one direction. The 128 bit AES encryption code guarantee an high security. It's provided with an anti-opening tamper protection. It's also supervised (automatic life test). The standard lithium-ions battery allows a very long duration. Protection class IP54.

Available colours: white, dark brown - Dimensions: W 130, H 37, D 37 mm

Order Codes:

IF800/T: 868 MHz, white colour

IF900/T: 916 MHz, white colour

IF800/T-M: 868 MHz, dark brown colour

IF900/T-M: 916 MHz, dark brown colour



■ **IF800 / IF900** • Wireless volumetric detector

It's a 15 mt range infrared wireless detector with more than 90° angular range thanks to its 31 beam lens. It communicates with the control panel by a bidirectional digital radio transmission channel to avoid signal collisions or band saturation and ensure high stability and precision. The 128 bit AES encryption code guarantee an high security. It's provided with an anti-opening tamper protection. It's also supervised (automatic life test). The standard lithium-ions battery allows a very long duration.

Available colours: white - Dimensions: W 60, H 110, D 46 mm

Order Codes:

IF800: 868 MHz, white colour

IF900: 916 MHz, white colour

■ **IF800/P / IF900/P** • Wireless volumetric detector, pet immune

Like IF800 / IF900 but available pet immunity up to 15 kg.

Order Codes:

IF800/P: 868 MHz, pet immune, white colour

IF900/P: 916 MHz, pet immune, white colour



■ **SS800 / SS900** • Wireless seismic detector

It's a small device; it has 2 completely separable and partitionable configurable inputs: an internal micro seismic detector and a clamped input for an external generic contact. It communicates with the control panel by a bidirectional digital radio transmission channel to avoid signal collisions or band saturation and ensure high stability and precision. The 128 bit AES encryption code guarantee an high security. It's provided with anti-opening protection. It's also supervised (automatic life test). The standard lithium-ions battery allows a very long duration.

Available colours: white, dark brown - Dimensions: W 37, H 78, D 21 mm

Order Codes:

SS800: 868 MHz, white colour

SS900: 916 MHz, white colour

SS800-M: 868 MHz, dark brown colour

SS900-M: 916 MHz, dark brown colour

WIRELESS SYSTEMS ACCESSORIES

800 Series • 868 MHz

900 Series • 916 MHz

EN 50131 / GRADE 2 / CLASS 2



■ **GS800 / GS900** • Wireless glass break detector

Detector for the notification of glass breakage. It has an adjustable range up to 7 mt. It communicates with the control panel by a bidirectional digital radio transmission channel to avoid signal collisions or band saturation and ensure high stability and precision. The 128 bit AES encryption code guarantee an high security. It's provided with anti-opening protection. It's also supervised (automatic life test). The standard lithium-ions battery allows a very long duration.

Available colours: white, dark brown - Dimensions: W 37, H 130, D 27 mm

Order Codes:

GS800: 868 MHz, white colour

GS800-M: 868 MHz, dark brown colour

GS900: 916 MHz, white colour

GS900-M: 916 MHz, dark brown colour



■ **SF800 / SF900** • Wireless smoke detector

It's a stand-alone wireless smoke detector designed for protection small areas. It's an optical smoke detector that uses the Tyndall effect to verify the presence of combustion particles in the air. In particular, reveals cold smoke and visible (with the combustion particles sized between 0,3 μm and 2 μm). It's equipped with a 9-volt battery and emits a modulated sound, compatible with the evacuation signal when it detects smoke. It communicates with the control panel by a bidirectional digital radio transmission channel to avoid signal collisions or band saturation and ensure high stability and precision. The 128 bit AES encryption code guarantee an high security. It's also supervised (automatic life test). The standard lithium-ions battery allows a very long duration.

Available colour: white

Dimensions: \varnothing 120, H 55 mm

Order Codes:

SF800: 868 MHz, white colour

SF900: 916 MHz, white colour



■ **Soutdoor800 / Soutdoor900** • Outdoor wireless detector

It's an outdoor double PIR detector, pet immune. It is usable with 800/900 series wireless system. It's a full digital detector (with 2 digital PIR), with an analysis system devoid of the classical noise that occur with the use of traditional analog PIR. Through the use of fully digital PIR detector is protected from white light masking and has much higher efficiency in the discrimination in its action range. Even with the significant temperature variations, the digital temperature compensation system guarantees a high efficiency. It has a range of 15 mt, with an opening angle of 90°. Protection class IP65.

Available colour: white - Dimensions: W 85, H 185, D 66 mm

Order Codes:

Soutdoor800: 868 MHz, white colour

Soutdoor900: 916 MHz, white colour

TR800 / TR900 • Pocket remote control

Programmable 4 channels radio remote controller. It communicates with the control panel by a bidirectional digital radio transmission channel to avoid signal collisions or band saturation and ensure high stability and precision. Also this allows you to have a carryover of system status or of any equipment that is managed remotely. The 128 bit AES encryption code guarantee an high security. The standard lithium-ions battery allows a very long duration. Dimensions: W 42, H 58, D 13 mm



Order Codes:

TR800-WG: 868 MHz, white with grey keys

TR800-GW: 868 MHz, grey with white keys

TR800-BG: 868 MHz, black with grey keys

TR900-WG: 916 MHz, white with grey keys

TR900-GW: 916 MHz, grey with white keys

TR900-BG: 916 MHz, black with grey keys

PZ800 / PZ900 • Indoor wireless siren



It's an indoor wireless, bitonal, piezoelectric siren with red led flash. The housing is made in ABS. It communicates with the control panel by a bidirectional digital radio transmission channel to avoid signal collisions or band saturation and ensure high stability and precision. The 128 bit AES encryption code guarantee an high security. The standard lithium-ions battery allows a very long duration.

Available colour: white

Dimensions: W 73, H 123, D 47 mm

Order Codes:

PZ800: 868 MHz, white cover, red light

PZ900: 916 MHz, white cover, red light

SRL800 / SRL900 • Outdoor wireless siren

It's a two-way supervised wireless siren. 128 bit AES encryption code; autolearning programming and/or code programming. Powered with 3.6V 18Ah Lithium batteries included. Possibility to power with external power supply with 4V to 15V 200mA max. It's provided with anti-opening and back tampers protection; high efficiency LED light. Memory alarm signals, arm/disarm signals. Protection class IP54.

Available colour: white - Dimensions: W 210, H 295, D 70 mm

Order Codes:

SRL800: 868 MHz, white cover, red light

SRL800-WW: 868 MHz, white cover, white light

SRL800-WB: 868 MHz, white cover, blue light

SRL900: 916 MHz, white cover, red light

SRL900-WW: 916 MHz, white cover, white light

SRL900-WB: 916 MHz, white cover, blue light



HIGH QUALITY DETECTORS



The new **ProLine detectors** represent the best choice for residential and industrial installations in the security sector. ProLine detectors uses only digital PIRs, thus avoiding the conversion that generally must be done in traditional detectors, where the analog PIR is amplified and converted to digital.

Thanks to the **TOTALLY** digital technology, the detector is much more accurate in detecting intrusions and not suffering of alterations such as: white light, ultraviolet light, temperature, air movement due to heating/cooling systems and it is totally immune to radiated and conducted electromagnetic disturbances.

ProLine detectors are equipped with lenses designed by AMC and made by Fresnel Technologies, Inc. **LODIFF®** technology for optics realization in combination with **POLY IR®** materials make it a product with highest quality and efficiency.

All ProLine detectors are pet immune with range of 15 mt, with 100 degrees angle.



Anti-masking

Anti-masking protection activated from 1 to 30 cm from the detector.



Full digital PIR

The detector has no analog components, the full digital PIR is connected directly to the microprocessor.



White light protection

The detector is digitally filtered from white light.



High RFI protection

Thanks to the total lack of traditional amplifiers, the detector has a very high RFI immunity.



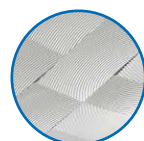
Ultraviolet stabilization POLY IR®4 material for lenses

The lens is molded in POLY IR® materials. These materials offer the best combination of transmittance, environmental stability, and color of any polymer. Materials available for the 8-14 micron region of the infrared.



Pet immunity

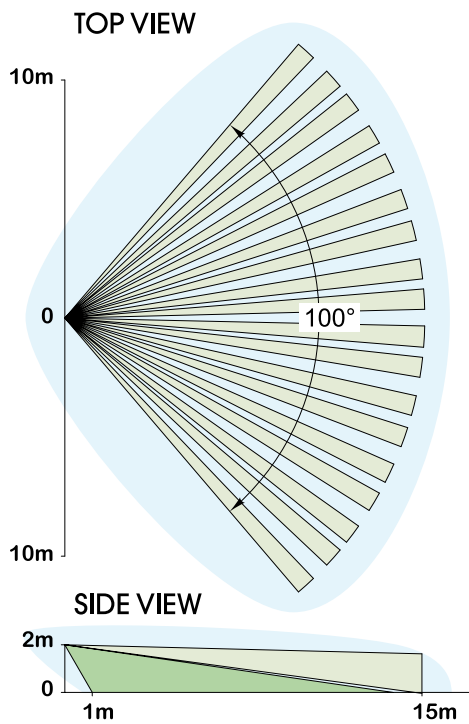
All our detectors are pet immune up to 15 Kg, thanks to the new lens design combined with the digital analysis system.



LODIFF® Fresnel Lens Technology

The lens array is made by tiling pieces of LODIFF® lenses. These lenses offer significantly improved performance over typical constant-groove-width Fresnel.

LODIFF® and POLY IR® are registered trademarks of Fresnel Technologies, Inc.



IR1

CONFORM TO EN 50131-2-2 / GRADE 2

Digital PIR detector with EOL resistors

DT1

CONFORM TO EN 50131-2-4 / GRADE 2

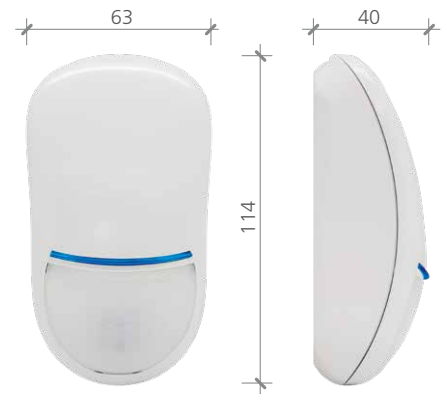
Dual Technology detector with EOL resistors

DT1AM

CONFORM TO EN 50131-2-4 / GRADE 3

Dual Technology, Anti-Masking detector with EOL resistors

BRACKET SN4
(wall / ceiling bracket)



Technical Features	IR1 DIGITAL PIR	DT1 DUAL TECHNOLOGY	DT1AM DUAL TECHNOLOGY
RANGE	15 mt	15 mt	15 mt
ANGLE	100°	100°	100°
LENS	Fresnel Lens LODIFF® POLY IR®4 material	Fresnel Lens LODIFF® POLY IR®4 material	Fresnel Lens LODIFF® POLY IR®4 material
LED	blue	green, yellow, blue	green, yellow, blue
ALARM TIME	2''	2''	2''
SELF TEST	-	-	YES
WALK TEST'S LED	YES	YES	YES
MICROWAVE FREQUENCY	-	9.3 - 9.9 - 10.5 Ghz	9.3 - 9.9 - 10.5 Ghz
SOLID STATE RELAY	YES	YES	YES
INTERNAL EOL RESISTORS	YES	YES	YES
CREEP ZONE	YES	YES	YES
ANTI-OPENING TAMPER	YES	YES	YES
BACK TAMPER	YES	YES	YES
ANTI-MASKING DEVICE	-	-	YES
PULSE COUNTER	YES	YES	YES
RFI PROTECTION	30 V/m	30 V/m	30 V/m
TEMPERATURE COMPENSATION	YES	YES	YES
FULL DIGITAL	YES	YES	YES
BRACKET AVAILABLE	YES	YES	YES
POWER SUPPLY	13.8 Vdc	13.8 Vdc	13.8 Vdc
HOUSING	ABS	ABS	ABS
PET IMMUNITY	YES	YES	YES
OPERATING TEMPERATURE	from -10°C to +40°C	from -10°C to +40°C	from -10°C to +40°C
DIMENSIONS	114 x 63 x 40 mm	114 x 63 x 40 mm	114 x 63 x 40 mm

DUAL TECHNOLOGY

Promask

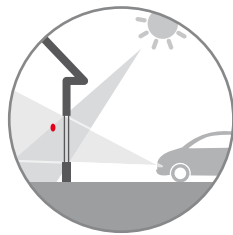
EN 50131-2-4 / GRADE 2



10 YEARS
warranty



Anti-Masking

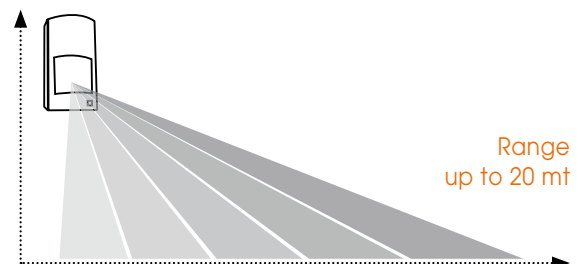


RFI/white light
digital filter
protection

Accelerometer

Infrared digital analysis

Technical Features	Promask
EN 50131-2-4 / GRADE 2	YES
RANGE	20 mt
ANGLE	90°
LENS	Fresnel
MICROWAVE FREQUENCY	9.3 - 9.9 - 10.5 Ghz
MICROWAVE EMITTED POWER	10 mW impuls
ALARM TIME	2"
ALARM TYPE	AND - OR - AUTO OR
WALK TEST'S LED (MW & PIR)	YES
ANTI-OPENING TAMPER	YES
BACK TAMPER	with accelerometer
ALARM CONTACT	100 mA - 40 V - 2.5 - 16 Ω
PULSE COUNTER	YES
RFI PROTECTION	30 V/m
TEMPERATURE COMPENSATION	YES
DIGITAL ANALYSIS	YES
BRACKET AVAILABLE	YES
POWER SUPPLY	13.8 Vdc
CONSUMPTION	32 mA
HOUSING	ABS
OPERATING TEMPERATURE	from -10°C to +40°C
DIMENSIONS	130 x 65 x 40 mm



Promask is the first born of a new generation of high-end digital detectors DT from AMC, indeed the functional features and multiple updates allows this detector to be on of the best products on the market.

Some updates:

- **ANTI-MASKING** active on both technologies
- **NOISE REDUCTION** function for installation problems in terms of noise
- Activation and deactivation of the **MICROWAVE EMISSION** according to system status
- Internal/built in **ACCELEROMETER**, with position recognition, vertical and horizontal, with tamper, removing, mechanical shocks and orientation notifications with no need of any connection to the wall.

Available colours: white

BRACKET SN2
(wall bracket)



Smile

EN 50131-2-2 / GRADE 2



Pet Immunity

BRACKET SN2
(wall bracket)



BRACKET SN4
(wall / ceiling bracket)



Smile19 - Smile19/P

EN 50131-2-2 / GRADE 2

Digital PIR

PET IMMUNE up to 15 kg (Smile 19/P)

Smile20 - Smile20/P

EN 50131-2-2 / GRADE 2

Digital PIR with internal EOL resistors

PET IMMUNE up to 15 kg (Smile 20/P)



Smile21 - Smile21/P

CONFORM TO EN 50131

Digital PIR

Automatic system for coverage regulation

PET IMMUNE up to 15 kg (Smile 21/P)

Smile22 - Smile22/P

CONFORM TO EN 50131

Digital PIR with internal EOL resistors

Automatic system for coverage regulation

PET IMMUNE up to 15 kg (Smile 22/P)



Detectors with an analysis system that takes into account the two most important changes that may occur during a movement: the speed and the intensity. With the simultaneous comparison of these two information, the detectors are able to discriminate repetitive movements from intrusion, lowering the percentage of false alarms. With high thermal variations, the totally digital temperature compensation system, guarantees a great performance. They have 15 mt coverage, with angle of 90°. With the special lens are equipped of creep zone. **Available colours:** white

Technical Features	Smile 19 Smile 19/P	Smile 20 Smile 20/P	Smile 21 Smile 21/P	Smile 22 Smile 22/P
EN 50131-2-2 / GRADE 2	YES	YES	conform	conform
RANGE	15 mt	15 mt	15 mt	15 mt
ANGLE	90°	90°	90°	90°
ALARM TIME	2''	2''	2''	2''
WALK TEST'S LED	YES	YES	YES	YES
SOLID STATE RELAY	YES	YES	YES	YES
SEPARATED ALARM AND TAMPER RELAYS	-	-	YES	YES
INTERNAL EOL RESISTORS	-	1K, 2k2, 4k7, 5k6, 8k2	-	1K, 2k2, 4k7, 5k6, 8k2
CREEP ZONE	YES	YES	YES	YES
ANTI-OPENING TAMPER	YES	YES	YES	YES
PULSE COUNTER	YES	YES	YES	YES
RFI PROTECTION	30 V/m	30 V/m	30 V/m	30 V/m
TEMPERATURE COMPENSATION	YES	YES	YES	YES
DIGITAL ANALYSIS	YES	YES	YES	YES
BRACKET AVAILABLE	YES	YES	YES	YES
POWER SUPPLY	13.8 Vdc	13.8 Vdc	13.8 Vdc	13.8 Vdc
CONSUMPTION	12 mA	12 mA	12 mA	12 mA
HOUSING	ABS	ABS	ABS	ABS
PET IMMUNITY	Smile 19/P	Smile 20/P	Smile 21/P	Smile 22/P
OPERATING TEMPERATURE	from -10°C to +40°C			
DIMENSIONS	110 x 60 x 46 mm			

DUAL TECHNOLOGY

Mouse

EN 50131-2-4

BRACKET SN2
(wall bracket)



BRACKET SN4
(wall / ceiling bracket)



Mouse02

EN 50131-2-4 **GRADE 3**

Dual Technology ANTI-MASKING detector with EOL resistors



Anti-Masking

Simplified Assembly
without screws



Mouse09

Mouse09/P

EN 50131-2-4 / GRADE 2

Dual Technology detector with EOL resistors
PET IMMUNE up to 15 kg (Mouse 09/P)



Pet Immunity

10 YEARS
warranty



Technical Features	Mouse 02	Mouse 09 Mouse 09/P
EN 50131-2-4 / GRADE 2	-	YES
EN 50131-2-4 / GRADE 3	YES	-
RANGE	15 mt	15 mt
ANGLE	90°	90°
ALARM TIME	2"	2"
SELF TEST	YES	-
WALK TEST'S LED	YES	YES
MICROWAVE FREQUENCY	9.3 - 9.9 - 10.5 Ghz	
SOLID STATE RELAY	YES	YES
INTERNAL EOL RESISTORS	1K, 2k2, 4k7, 5k6, 8k2	
CREEP ZONE	YES	YES
ANTI-OPENING TAMPER	YES	YES
ANTI-MASKING DEVICE	YES	-
PULSE COUNTER	YES	YES
RFI PROTECTION	30 V/m	30 V/m
TEMPERATURE COMPENSATION	YES	YES
DIGITAL ANALYSIS	YES	YES
BRACKET AVAILABLE	YES	YES
POWER SUPPLY	13.8 Vdc	13.8 Vdc
CONSUMPTION	23 mA	23 mA
HOUSING	ABS	ABS
PET IMMUNITY	-	Mouse 09/P
OPERATING TEMPERATURE	from -10°C to +40°C	
DIMENSIONS	110 x 60 x 46 mm	

Dual technology detectors with an analysis system that takes into account the two most important changes that may occur during a movement: the speed and the intensity. With the simultaneous comparison of these two information, the detectors are able to discriminate repetitive movements from intrusion, lowering the percentage of false alarms. With high thermal variations, the totally digital temperature compensation system, guarantees a great performance. Are equipped with internal EOL resistors. They have 15 mt coverage, with angle of 90°. With the special lens are equipped of creep zone.

Available colours: white

DUAL TECHNOLOGY

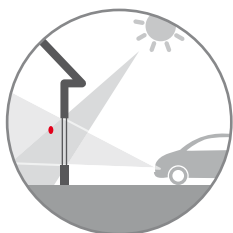
MouseGS

CONFORM TO EN 50131



Technical Features	Mouse GS	Mouse GS/P
POWER SUPPLY	13.8 Vdc	13.8 Vdc
CONSUMPTION	23 mA	23 mA
RANGE PIR	3 - 15 mt	3 - 15 mt
RANGE MICROPHONE	10 mt	10 mt
ANGLE	90°	90°
ALARM TIME	2"	2"
WALK TEST'S LED	YES	YES
CREEP ZONE	YES	YES
ANTI-OPENING TAMPER	YES	YES
RFI PROTECTION	30 V/m	30 V/m
TEMPERATURE COMPENSATION	YES	YES
DIGITAL ANALYSIS	YES	YES
BRACKET AVAILABLE	YES	YES
HOUSING	ABS	ABS
PET IMMUNITY	-	YES
OPERATING TEMPERATURE	from -10°C to +40°C	from -10°C to +40°C
DIMENSIONS	110 x 60 x 46 mm	110 x 60 x 46 mm

Dual technology analysis
MICROPHONE and PIR



White light digital
filter protection



RFI digital
protection



Simplified
assembly
without screws

MouseGS - MouseGS/P



PIR and microphone glass break detector
PET IMMUNE up to 15 kg (Mouse GS/P)

Pet Immunity

It's a dual technology detector consists of a PIR and a microphone for the notification of shock and glass breakage. It has independent settings and separate outputs for the PIR and the microphone section. It has a maximum range of 10 mt for the microphone section, and approximately 15 mt for the infrared. You can adjust the microphone section only for glass breakage, or for shock and glass breakage. It has the ability to have different filterings to accentuate or less the efficiency in detecting breakages/damage.

Pet immune up to 15 kg (Mouse GS/P).

Available colours: white

BRACKET SN2
(wall bracket)



BRACKET SN4
(wall / ceiling bracket)



GS1

CONFORM TO EN 50131

10 YEARS
warranty



Technical Features	GS1
POWER SUPPLY	13.8 Vdc
CONSUMPTION	15 mA
RANGE MICROPHONE	8 mt
ALARM TIME	2''
ANTI-OPENING TAMPER	YES
RFI PROTECTION	30 V/m
DIGITAL ANALYSIS	YES
HOUSING	ABS
OPERATING TEMPERATURE	from -10°C to +40°C
DIMENSIONS	37 x 78 x 21 mm

GS1 is a microphone glass break detector. It is equipped with filters that allow to determinate different types of glass breakage. It has a range of about 8 meters, and can be installed in any position without compromising efficiency. **Available colours:** white, dark brown
Order Codes:

GS1: white colour / **GS1-M:** dark brown colour

SEISMIC DETECTOR

SS14

DIGITAL DETECTOR WITH
ACCELEROMETER TECHNOLOGY

10 YEARS
warranty



Technical Features	SS14
POWER SUPPLY	13.8 Vdc
CONSUMPTION	23 mA
ALARM TIME	2''
ANTI-OPENING TAMPER	YES
RFI PROTECTION	30 V/m
DIGITAL ANALYSIS	YES
HOUSING	ABS
OPERATING TEMPERATURE	from -10°C to +40°C
DIMENSIONS	37 x 78 x 21 mm

SS14 is a vibration/inertial detector designed for the protection of windows, cabinets, fixtures, and so on. It has a high-precision vibration sensor, which allows to determine the type of shock and/or vibration caused by an attempt to break through or forcing a frame. It is not necessary to use pulse analysis boards since everything is processed within the sensor itself. It is equipped with 2 channels, contact REED and INERTIAL / FLIP. **Available colours:** white, dark brown

Order Codes:

SS14: white colour / **SS14-M:** dark brown colour

Soutdoor

Soutdoor/T

TRIPLE TECHNOLOGY

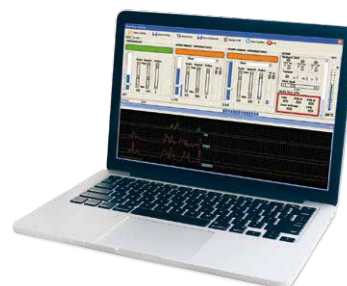
EN 50131-2-4 / GRADE 2 / CLASS 4

Soutdoor/T is an outdoor detector, that can be used for all external installations. It can be programmed by PC software, for these reason it is very efficient and complete for any particular installation (in garden with a lot of plants, animals, sun, and other sources that cause false alarms). It has maximum endurance, thanks to high protection grade. You have also the possibility to change cover, with different lens, so Soutdoor/T is suggested for all types of installation (near wall for door and windows protection, in places reach of vegetables or in presence of animals).

- Outdoor detector programmable by PC software:
 1. Complete programming of all detector's function
 2. Graphic visualization of each technology coverage
 3. Possibility of consulting the last events, memorized by detector
 4. Possibility of configuring the outputs
 5. Possibility of configuring 4 PRESET working, based on requirements
 6. Possibility of configuring pre-alarms, using one or more detector's technologies
- Range from 3 mt to 15 mt
- Internal memory events, to verify which technology has generated alarm
- Detector with three technologies (2 PIR, 1 microwave)
- Cover with different lens, depending on the type of installation (volumetric, curtain vertical/horizontal)
- PET immunity adjustable with different weight
- Double anti-masking with active IR
- Back tamper, and anti-opening with microswitch
- Anti-inclination tamper with accelerometer when it is used with bracket
- 3 outputs relé free to be used for alarm functions, masking and blinding
- Input of block detector (exclusion microwave when the system is disarmed)
- Trimmer coverage regulation in the function stand alone
- Protection class IP65
- Led two-colour Red and Green
- N° 6 Dip switches to setup functions:
AND OR AUTO OR MULTIMPULSE PRESET, that you can set up by pc (4 separate preset)
- Temperature -30°+70°
- Available colours: white
- Dimensions: W 85, H 185, D 66 mm



SETTABLE by PC



Pet Immunity



Anti-Masking

OUTDOOR DETECTORS

Soutdoor

Soutdoor/L

DUAL DIGITAL PIR

Soutdoor/L is a dual digital PIR detector, with an analysis system that takes into account the two most important changes that may occur during a movement: the speed and the intensity. With the simultaneous comparison of these two information, the detector is able to discriminate repetitive movements from intrusion, lowering the percentage of false alarms. With high thermal variations, the totally digital temperature compensation system, guarantees a great performance. Has 12 mt max coverage, with angle of 90°. With usable different type of lens it is possible use the detector in different situation, related to the height positioning, and the type of protection required, as curtain protection etc. Available colours: white - Dimensions: W 85, H 185, D 66 mm

Functional features:

- Double PIR detector with AND function (AND time 4")
- Range from 6 mt to 12 mt
- Alarm Led
- Double pulse function
- Interchangeable fresnel lenses
- Bracket
- Free alarm contact solid state relay (NO, NC)
- Tamper contact solid state relay (NO e NC)

Technical features:

- Power supply: from 10.5V to 15V
- Stand-by consumption: 14 uA
- Alarm consumption: 25 mA
- Protection class IP65



Pet Immunity



Soutdoor/BC

DUAL DIGITAL PIR

LOW CONSUMPTION

Soutdoor/BC is a low consumption outdoor detector. It is usable with all types of radio transmitters, due to the very low consumption, 9uA ensures a long battery life of the radio devices connected. It has a very low threshold operation, 2.55Vdc. It's a full digital detector (with digital PIR), with an analysis system devoid of the classical noise that occur with the use of traditional analog PIR. Through the use of fully digital PIR detector is protected from white light masking and has much higher efficiency in the discrimination in its action range. Even with the significant temperature variations, the digital temperature compensation system guarantees a high efficiency. It has a range of 15 mt, with an opening angle of 90°. Available colours: white - Dimensions: W 85, H 185, D 81 mm

Functional features:

- Double PIR detector with AND function (AND time 4")
- Range from 3 mt to 15 mt
- Alarm Led
- Alarm Buzzer
- Test function
- Stand by mode for battery saving
- Double pulse function
- Interchangeable fresnel lenses
- Bracket
- Free alarm contact solid state relay (NO, NC)
- Tamper contact solid state relay (NO e NC)

Technical features:

- Power supply: from 3 V to 9 V
- Stand-by consumption: 9 uA
- Alarm consumption: 5 mA
- Protection class IP65

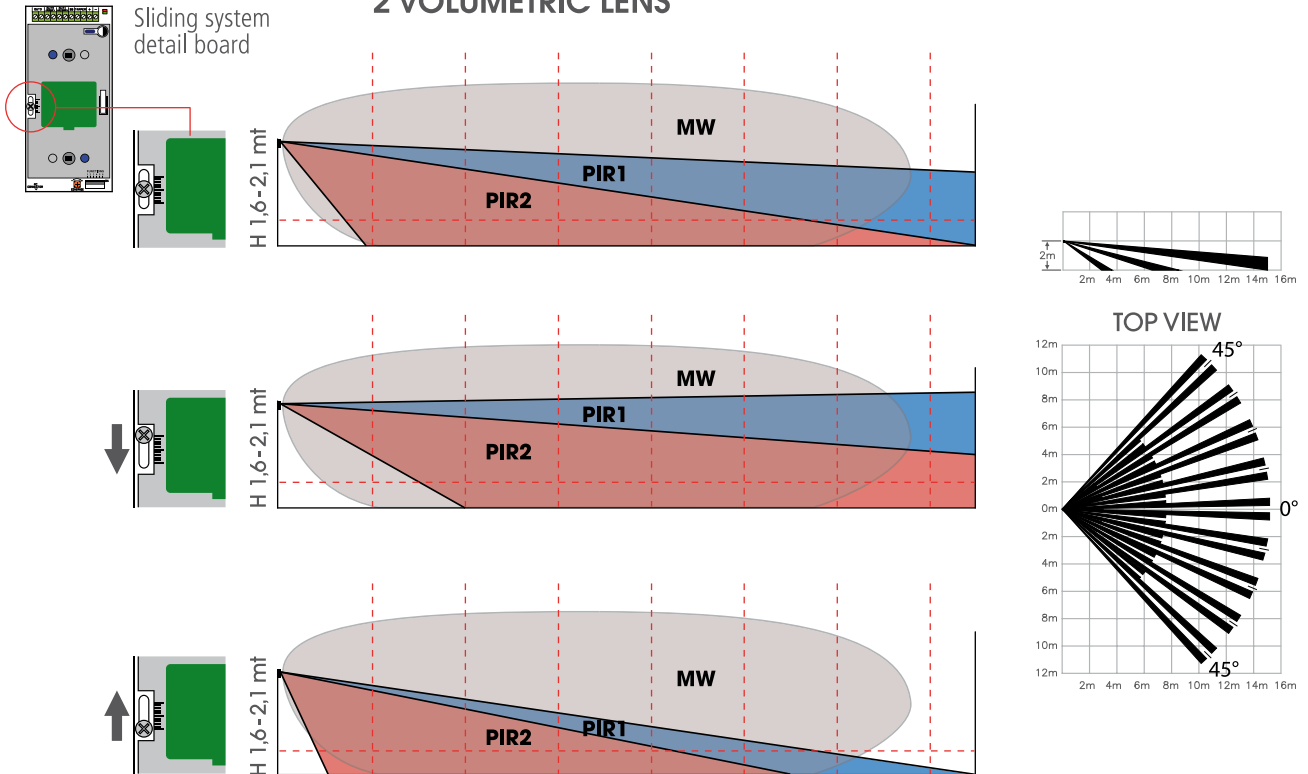


Pet Immunity

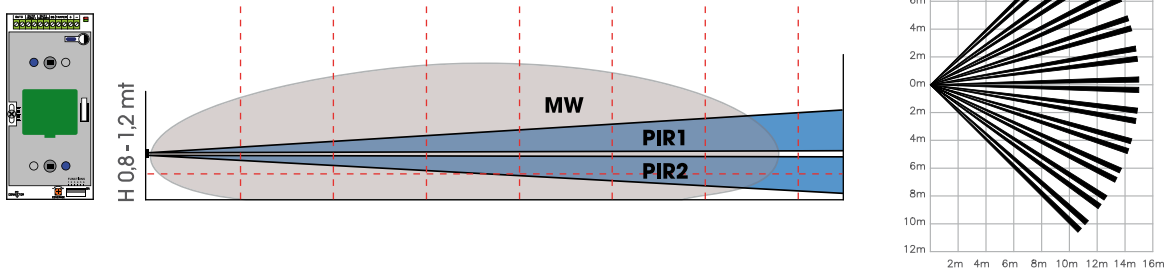


Soutdoor gives the possibility of changing and combining different kinds of lens for any specific requirement

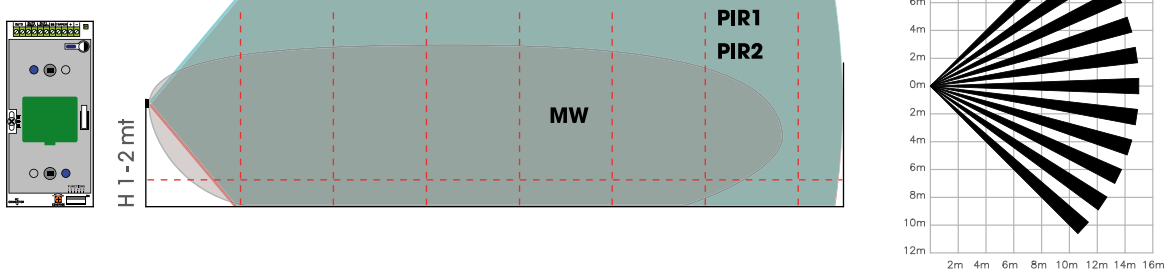
2 VOLUMETRIC LENS



2 HORIZONTAL CURTAIN LENS



2 VERTICAL CURTAIN LENS



DT16 - IF16/L - IF16/T



DT16

EN 50131-2-4 / GRADE 2
Dual Technology

DT16 is a dual technology detector, infrared and microwave at 10 Ghz suitable for creating a type of protection "curtain" for doors and windows. It has the back tamper, the anti-opening tamper device, a signalling LED with its disabling jumper. It has alarm direction recognition.

Order Codes:

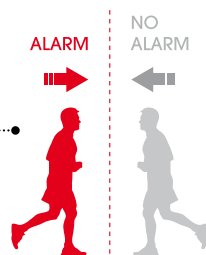
DT16: white colour / **DT16-M:** dark brown colour

IF16/L

EN 50131-2-2 / GRADE 2
Passive infrared, with high power LED

IF16/L is an infrared detector, able to create a protective "curtain" barrier for doors and windows. It has an adjustable range between 2 mt and 3,5 mt and has some special features which make it very interesting as:

- led high light output for lighting function and/or alarm
- alarm direction recognition
- buzzer with different sounds depending on the direction of the movement
- delay system activation



Order Code:

IF16/L: white colour



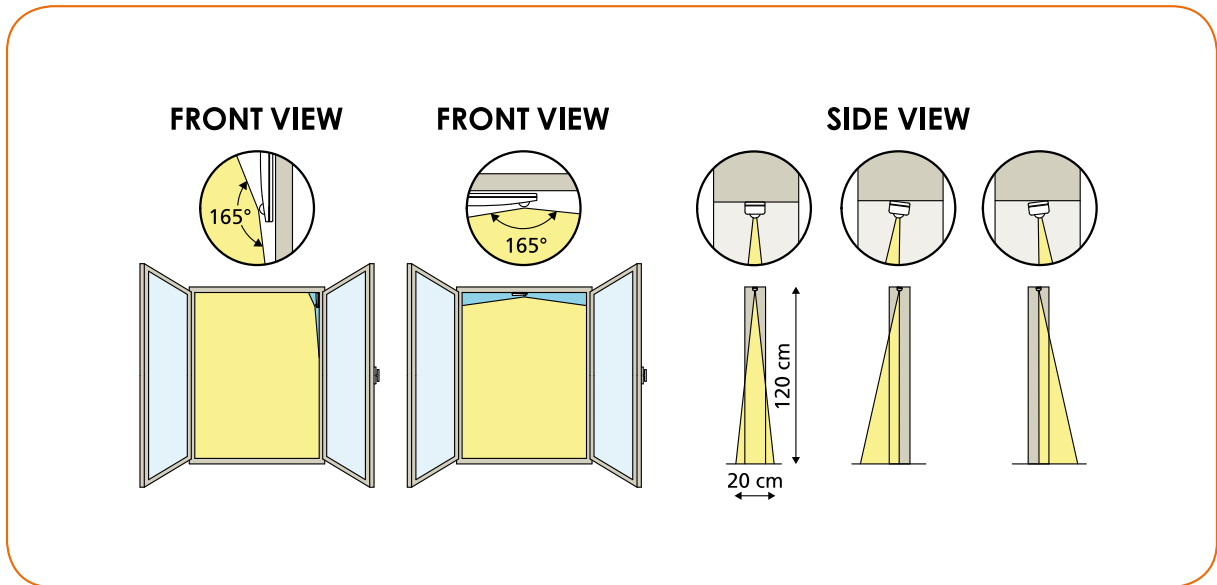
IF16/T

EN 50131-2-2 / GRADE 2
Passive infrared

IF16/T is an infrared detector, able to create a protective "curtain" barrier for doors and windows. It has an adjustable range between 2 mt and 3,5 mt and has delay system activation.

Order Codes:

IF16/T: white colour / **IF16/T-M:** dark brown colour



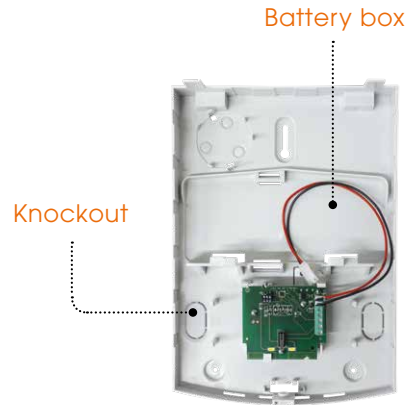
Technical Features	DT16	IF16/L	IF16/T
EN 50131-2-4 / GRADE 2	YES	-	-
EN 50131-2-2 / GRADE 2	-	YES	YES
RANGE	from 2 to 3,5 mt	from 2 to 3,5 mt	from 2 to 3,5 mt
ANGLE	165°	165°	165°
CURTAIN LENS ORIENTATION	YES	YES	YES
ALARM TIME	4''	4''	4''
PROGRAMMABLE ALARM DELAY	-	YES	YES
HIGH POWER LED FOR LIGHTING AND/OR ALARM	-	YES	-
WALK TEST'S LED	YES	YES	YES
DOUBLE SOUND BUZZER (ENTRANCE/EXIT)	-	YES	-
ANTI-OPENING TAMPER	YES	YES	YES
RFI PROTECTION	30 V/m	30 V/m	30 V/m
TEMPERATURE COMPENSATION	YES	YES	YES
POWER SUPPLY	10 - 15 Vdc	10 - 15 Vdc	10 - 15 Vdc
CONSUMPTION IN STAND BY	18 mA	12 mA	12 mA
HOUSING	ABS	ABS	ABS
PROTECTION CLASS	IP 54	IP 54	IP 54
OPERATING TEMPERATURE	from -25°C to +55°C	from -25°C to +55°C	from -25°C to +55°C
DIMENSIONS	37 x 130 x 37 mm	37 x 130 x 37 mm	37 x 130 x 37 mm

OUTDOOR SIRENS

ITALIAN
DESIGN

BLADE

EN 50131-4 / GRADE 2



Blade is a self powered siren, elegant and cool design, suitable for all installations need. This product is entirely made of polycarbonate. All models are equipped with anti-opening and back tamper switches; the sound power is given by piezoelectric buzzer.

Available Case colours: white / red

Available Flash colours: red / white / blue

Dimensions: W 210, H 295, D 70 mm

Technical Features	Blade 01	Blade 01 / S	Blade 24
EN 50131-4 / GRADE 2	YES	-	-
SOUND POWER	100 dB at 1mt 85 dB at 3mt	100 dB at 1mt 85 dB at 3mt	100 dB at 1mt 85 dB at 3mt
WATCHDOG'S LED	YES	YES	YES
SYSTEM STATUS VISUALIZATION	-	YES	YES
ALARM'S MEMORY	-	YES	YES
SEPARATED TRIGGERS	-	YES	YES
WORKING WITHOUT BATTERY	-	YES	YES
ANTI-OPENING TAMPER	YES	YES	YES
BACK TAMPER	YES	YES	YES
PROTECTION CLASS	IP 54	IP 54	IP 54
POWER SUPPLY	13.8 Vdc	13.8 Vdc	24 V

ORDER CODES:

BLADE01: white cover, red light

BLADE01-WW: white cover, white light

BLADE01-WB: white cover, blue light

BLADE01/S: white cover, red light

BLADE01/S-WW: white cover, white light

BLADE01/S-WB: white cover, blue light

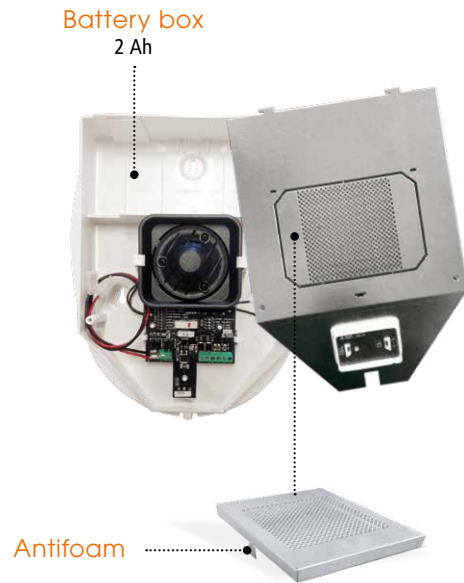
BLADE24: red cover, red light

BLADE24-RW: red cover, white light

BLADE24-RB: red cover, blue light

SR Series

EN 50131-4 / GRADE 2



SR Series sirens are available in 2 different versions: SR136 and SR136 FIRE / 24 V. These outdoor sirens are auto-supplied, with 2Ah battery's housing. All models are equipped with anti-opening and back tamper switches.

Available Case Colours: white / silver / red

Available Flash Colours: orange / red / blue

Dimensions: W 220, H 280, D 100 mm

Technical Features	SR136	SR136 FIRE / 24 V
EN 50131 - 4 / GRADE 2	YES	-
IMQ APPROVAL	YES	-
SOUND POWER	100 dB at 1 mt / 85 dB at 3 mt	100 dB at 1 mt / 85 dB at 3 mt
LED LAMP	YES	YES
WATCHDOG'S LED	YES	YES
SYSTEM STATUS VISUALIZATION	YES	YES
SYSTEM STATUS SOUND SIGNALLING	YES	YES
ALARM'S MEMORY	YES	YES
SEPARATED TRIGGERS	YES	YES
SOUND TYPE MODIFICATION	YES	YES
ANTI-OPENING TAMPER	YES	YES
BACK TAMPER	YES	YES
ANTI-FOAM PROTECTION	optional	optional
PROTECTION CLASS	IP 54	IP 54
POWER SUPPLY	13.8 Vdc	24 V

ORDER CODES:

SR136: white cover, orange light
SR136-WR: white cover, red light
SR136-WB: white cover, blue light

SR136-SO: silver cover, orange light
SR136-SR: silver cover, red light
SR136-SB: silver cover, blue light

SR136FIRE/24V: red cover, red light
SR136FIRE/24V-RO: red cover, orange light
SR136FIRE/24V-RB: red cover, blue light

OUTDOOR SIRENS

Iside

EN 50131-4 / GRADE 2



Iside is an auto supplied siren with an innovative design, suitable for all installations need. The Elliptical Shape allows to fix it in any position, vertical or horizontal, without the need to modify the functionality and the shape. The flat surface permits a simple and visible siren customization. This product is entirely made of polycarbonate. All versions are equipped with anti-opening and back tamper switches; the sound power utilises a piezoelectric technology, ensuring a low consumption level during triggering period.

Available Case colours: white / red

Available Flash colours: orange / blue / red

Dimensions: W 320, H 220, D 55 mm

Technical Features	Iside 130	Iside 140	Iside 140 / 24 V
EN 50131 - 4 / GRADE 2	-	YES	-
SOUND POWER	100dB at 1mt / 85dB at 3mt	100dB at 1mt / 85dB at 3mt	100dB at 1mt / 85dB at 3mt
BATTERY CHECK	-	YES	YES
LAMP CHECK	-	YES	YES
WATCHDOG'S LED	YES	YES	YES
SYSTEM STATUS VISUALIZATION	-	YES	YES
SYSTEM STATUS SOUND SIGNALLING	-	YES	YES
ALARM'S MEMORY	-	YES	YES
SEPARATED TRIGGERS	-	YES	YES
ANTI-OPENING TAMPER	YES	YES	YES
BACK TAMPER	YES	YES	YES
PROTECTION CLASS	IP 54	IP 54	IP 54
POWER SUPPLY	13.8 Vdc	13.8 Vdc	24 V

ORDER CODES:

ISIDE130: white cover, orange light
ISIDE130-WR: white cover, red light
ISIDE130-WB: white cover, blue light

ISIDE140: white cover, orange light
ISIDE140-WR: white cover, red light
ISIDE140-WB: white cover, blue light

ISIDE140/24V: red cover, red light
ISIDE140/24V-RO: red cover, orange light
ISIDE140/24V-RB: red cover, blue light

24V Sirens



Technical Features	Blade 24	SR 136 FIRE / 24 V	Inside 140 / 24 V
SOUND POWER	100dB at 1mt / 85dB at 3mt	100dB at 1mt / 85dB at 3mt	100dB at 1mt / 85dB at 3mt
BATTERY CHECK	-	-	YES
LAMP CHECK	-	-	YES
WATCHDOG'S LED	YES	YES	YES
SYSTEM STATUS VISUALIZATION	YES	YES	YES
SYSTEM STATUS SOUND SIGNALLING	YES	YES	YES
ALARM'S MEMORY	YES	YES	YES
SEPARATED TRIGGERS	YES	YES	YES
ANTI-OPENING TAMPER	YES	YES	YES
BACK TAMPER	YES	YES	YES
PROTECTION CLASS	IP 54	IP 54	IP 54
POWER SUPPLY	24 V	24 V	24 V

ORDER CODES:

BLADE24: red cover, red light

BLADE24-RW: red cover, white light

BLADE24-RB: red cover, blue light

SR136FIRE/24V: red cover, red light

SR136FIRE/24V-RO: red cover, orange light

SR136FIRE/24V-RB: red cover, blue light

ISIDE140/24V: red cover, red light

ISIDE140/24V-RO: red cover, orange light

ISIDE140/24V-RB: red cover, blue light

INDOOR SIREN

PZ2



PZ2 is a indoor, bitonal, piezoelectric siren, suitable for all installations need. This product is entirely made of ABS. It's equipped with anti-opening and back tamper switches.

Available Case colour: white

Dimensions: W 135, H 95, D 45 mm

Technical Features	PZ2
SOUND POWER	108 dB at 1mt
ANTI-OPENING TAMPER	YES
BACK TAMPER	YES
POWER SUPPLY	12 Vdc

Voxout

EN 50136 -1-1 / GRADE 2 / ATS 2

Technical Features	Voxout Voxout 3E*
EN 50136-1-1 / GRADE 2 / ATS 2	YES
NUMBER OF INPUTS / OUTPUTS	5
TELEPHONE NUMBERS	8
MESSAGE TIME	20"
DTMF DECODING	YES
SMS SENDING	YES
KEYPAD PROGRAMMABLE	YES
VOICE MENU PROGRAMMABLE	YES
SMS PROGRAMMABLE	YES
SIM EXPIRE ADVISE	YES
SIM CREDIT LEFT ADVISE	YES
PSTN LINE SIMULATION	YES
CALLER'S ID RECOGNITION	YES
POWER SUPPLY	13.8 Vdc

*with 3G module

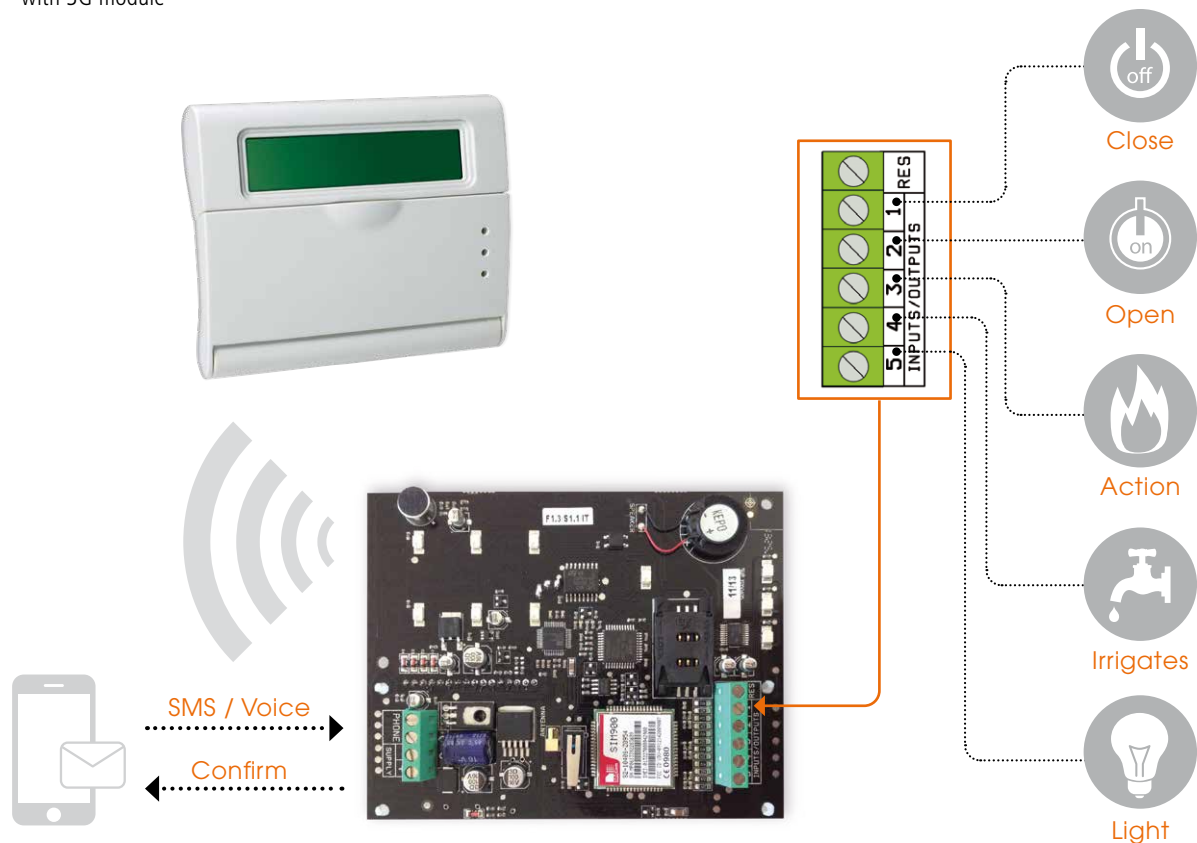
Voxout is a **GSM** dialler remote-controlled bidirectional 5-lines configurable as inputs and outputs. It has listening environment, the outputs can be managed by voice call, text messages and phone calls with CALLER ID recognition. The phone numbers are freely assignable to voice calls, SMS, digital protocols CONTACT ID.

- 5 terminals that can be programmed as inputs and / or outputs
- **Remote listening**
- Reset terminal calls
- 12 user codes
- 8 phone numbers can be associated with events and all the rest
- 200 telephone numbers used only for the activation of the outputs from the remote (ring and/or sms)
- 1 technical code
- 1 call reset code
- Life test sending
- Credit
- ID CONTACT transmission
- Dimensions: W 140, H 120, D 35 mm

Order Codes:

VOX_OUT: Voxout

VOX_OUT-3E: Voxout with 3G module







AMC Elettronica sas

Via Pascoli, 359 - Loc. Mirovano

22040 Alzate Brianza (CO) Italy

Tel. +39 031 63 27 80

Fax +39 031 63 27 81

info@amcelettronica.com

amcelettronica.com